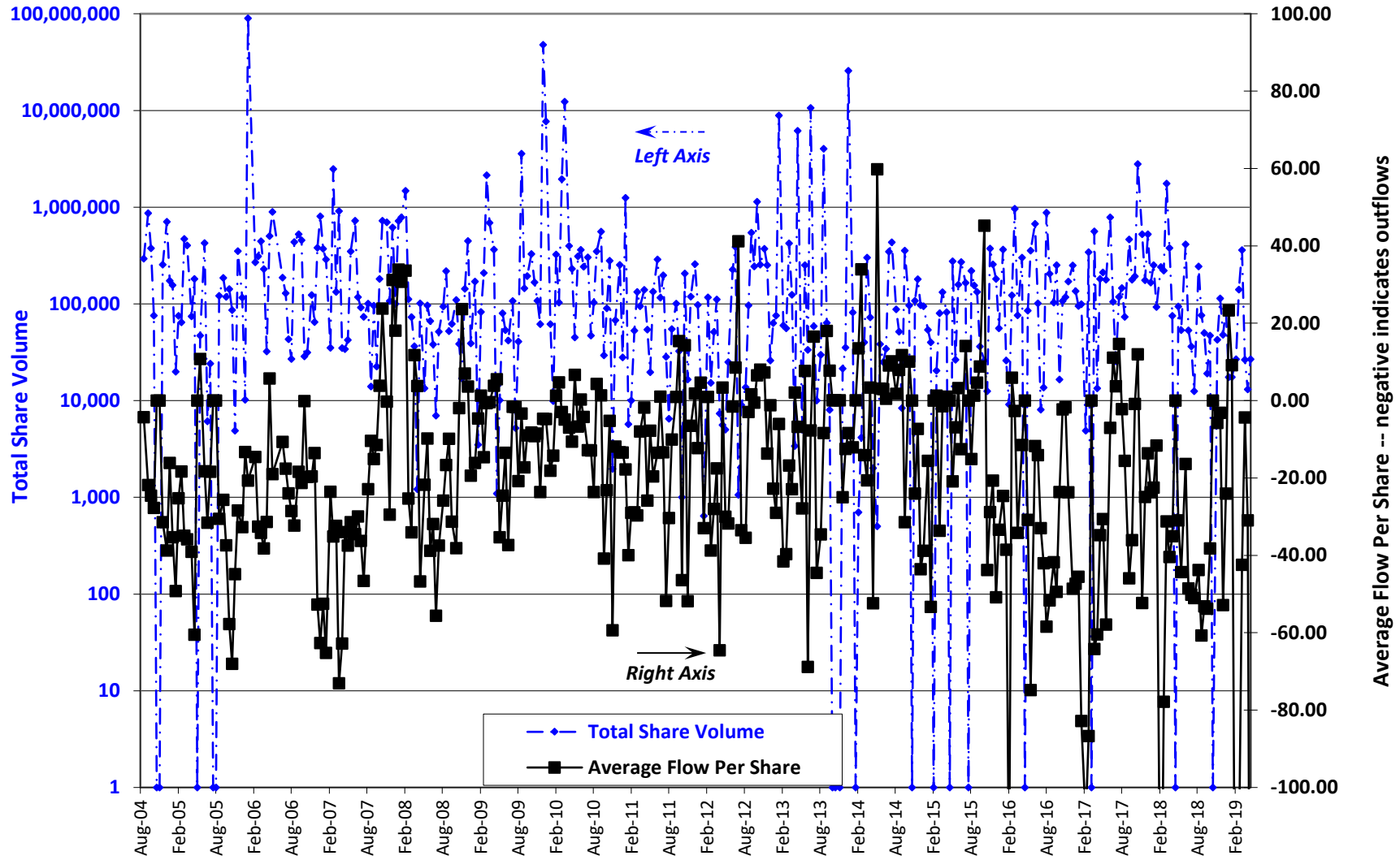




Insider Activity

16 Apr 2019





About the PM40

PaperMoney has developed this forest industry/pulp and paper stock index for use in gauging the relative health of the overall industry. The index, PM40, contains 40 companies engaged primarily in forestry, pulp and paper manufacturing, converting, and printing. Our criterion for selection is as follows:

- Geographic Limitations--none
- Stock Exchange Listing--must be listed on a US exchange (to eliminate the effects of currency fluctuations). American Depositary Receipts (ADRs) are eligible for inclusion.
- Must be primarily dependent on cellulose in any form for business health. In other words, Kimberly-Clark is included, but Procter & Gamble is not. McGraw Hill is included, but the New York Times is not.
- The PM40 is a price-weighted index, rebalanced quarterly.

The companies comprising the index are:

1. 3M Co. (MMM)	11. Glatfelter Co. (GLT)	21. Neenah, Inc. (NP)	31. Sonoco Products Co. (SON)
2. Amcor Ltd. (AMCRY)	12. Graphic Packaging Holding Co. (GPK)	22. Packaging Corp. of America (PKG)	32. Stora Enso Oyj (SEOAY)
3. Avery Dennison (AVY)	13. Greif Inc. (GEF)	23. PotlatchDeltic Corp. (PCH)	33. Suzano Papel e Celulose (SUZ)
4. Bemis Co. (BMS)	14. Hadera Paper Ltd. (HAIPF)	24. Quad (QUAD)	34. Universal Forest Products Inc. (UFPI)
5. Boise Cascade Co. (BCC)	15. International Paper Co. (IP)	25. Rayonier Advanced Materials (RYAM)	35. UPM-Kymmene Oyj (UPMKY)
6. Brookfield Infrastructure Partners (BIP)	16. IT Tech Packaging Inc. (ITP)	26. Rayonier Inc. (RYN)	36. USG Corp. (USG)
7. CatchMark Timber Trust Inc. (CTT)	17. Kimberly-Clark Corp. (KMB)	27. RELX Group (RELX)	37. Veritiv Corp. (VRTV)
8. Clearwater Paper Corp. (CLW)	18. Louisiana-Pacific Corp. (LPX)	28. Resolute Forest Products Inc. (RFP)	38. Verso Corp. (VRS)
9. Domtar Corp. (UFS)	19. LSC Communications Inc. (LKSD)	29. Sappi Ltd. (SPPJY)	39. WestRock Co. (WRK)
10. Ennis, Inc. (EBF)	20. Mercer International Inc. (MERC)	30. Schweitzer-Mauduit Int'l Inc. (SWM)	40. Weyerhaeuser Co. (WY)

PaperMoney original material is provided with the intent of stimulating ideas among highly trained, experienced and sophisticated financial managers within the pulp, paper and forest products industry worldwide. PaperMoney relies on published sources for any data used in this material and is not responsible for errors or omissions due to same. This material is expressly not provided for the purpose of investment decisions. Always consult your own advisors before making any investment decisions.